

3973 REGISTERED ARCHITECT
CHRIS EDWARD CARLSON
STATE OF WASHINGTON

buffalodesign
architecture & interiors

1501 western
suite 500
seattle, wa
98101
206 467 6306
fax 206 624 1494

Sno-Isle
Regional Library System

monroe library

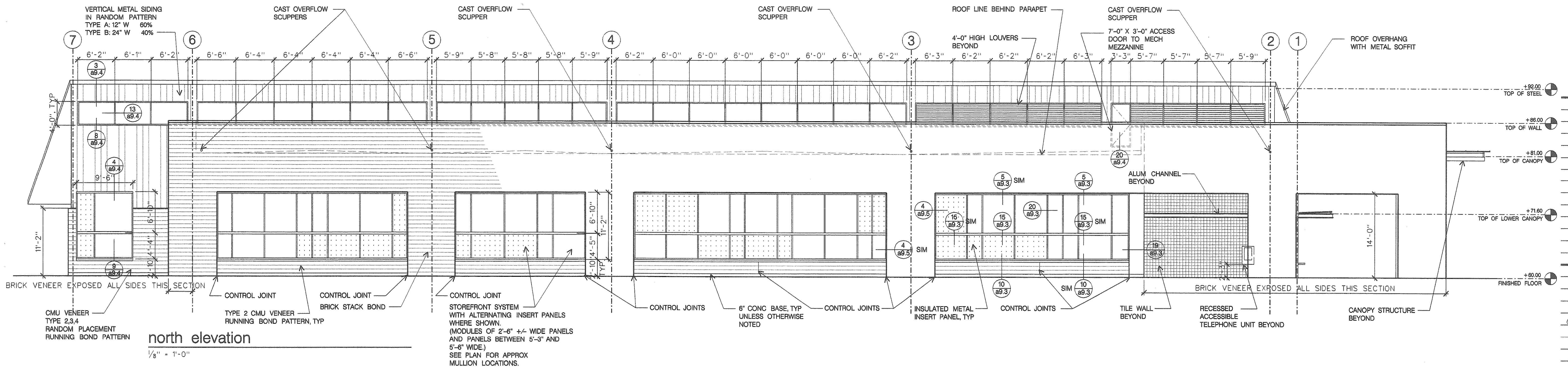
village way,
monroe, washington 98272

BID SET

project: 00-002
content: exterior elevations

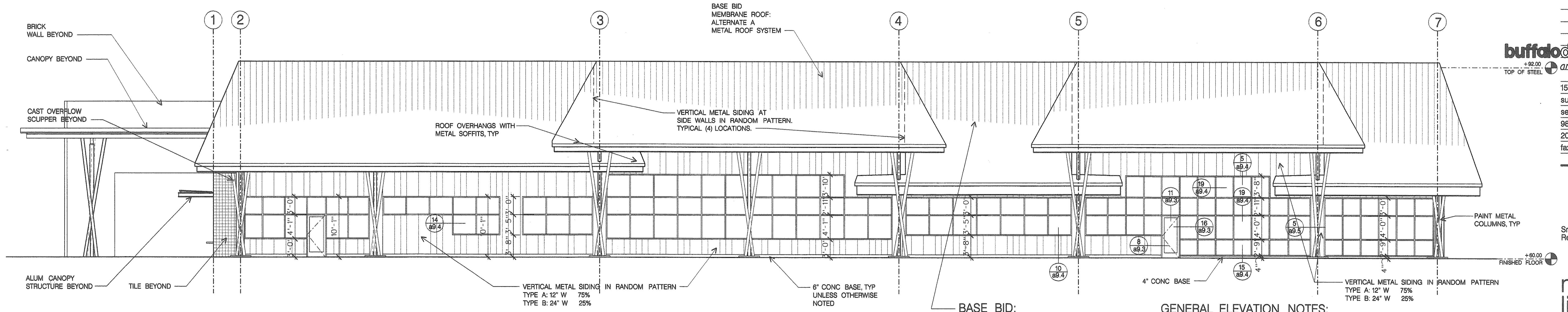
drawn:
checked:
date: april 17, 2001
revised:

a3.1



north elevation

1/8" = 1'-0"



south elevation

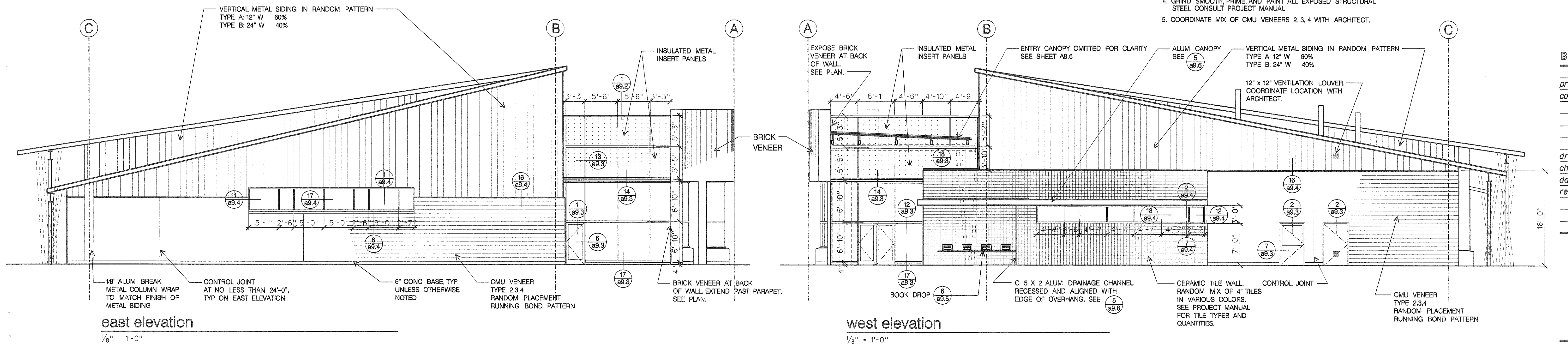
1/8" = 1'-0"

BASE BID:
MEMBRANE ROOF SYSTEM, CONSULT PROJECT MANUAL
PROVIDE SOFFITS AND TRIM AS SHOWN.

ALTERNATE A:
METAL ROOF SYSTEM WITH METAL SOFFITS
AND TRIM AS SHOWN.

GENERAL ELEVATION NOTES:

1. FIELD VERIFY ALL WINDOW, LOUVER, AND DOOR DIMENSIONS AND ELEVATIONS.
2. COORDINATE AND VERIFY LOCATIONS OF SCUPPERS, TRIM, AND MISC EQUIPMENT WITH ARCHITECT PRIOR TO INSTALLATION.
3. INSTALL WEEPS IN CMU AND BRICK VENEER. CONSULT PROJECT MANUAL. COORDINATE CONTROL JOINT LOCATIONS WITH ARCHITECT.
4. GRIND SMOOTH, PRIME, AND PAINT ALL EXPOSED STRUCTURAL STEEL. CONSULT PROJECT MANUAL.
5. COORDINATE MIX OF CMU VENEERS 2, 3, 4 WITH ARCHITECT.



east elevation

1/8" = 1'-0"

west elevation

1/8" = 1'-0"