

Welcome!



*Please mute your mic and camera



Deer Park Groundbreaking

February 17th 2021

Paula Brehm-Heeger
Eva Jane Romaine Coombe
Library Director



AGENDA

- 1. Facility Master Plan & Community Input
- 2. Vision
- 3. Design Process
- 4. Branch Design
- 5. Q & A

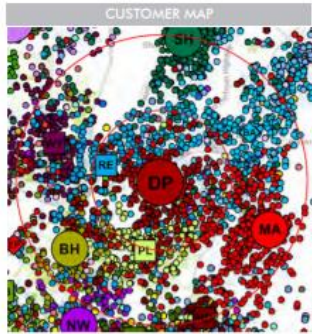
Natalie Fields
Branch Manager



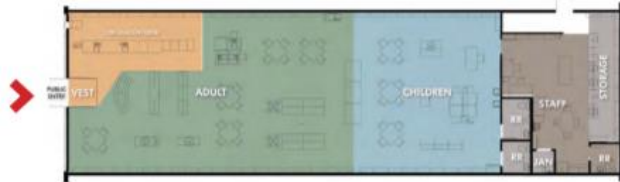
Diane Cunningham Redden
Board President & Board Liaison



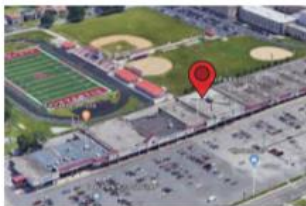
Community Engagement



PROJECT DATA	
Existing Lease	4,105 SF
Relocation Lease	22,500 SF - 27,500 SF
Parking & Roadwork	8,000 SF
Hardscape & Landscape	5,000 SF



Floor plan



Aerial view of the location



Children's area

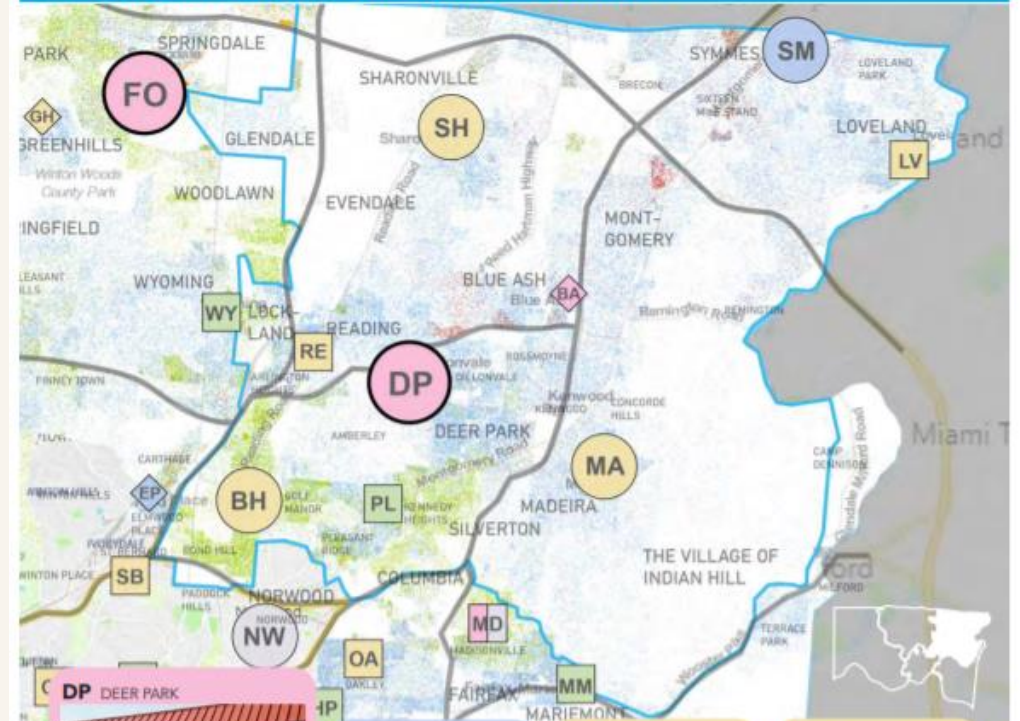
DP - DEER PARK NEIGHBORHOOD NETWORK

Branch	Type	Strategy	Distance
PL Pleasant Ridge	NHBD	Capital Maintenance + Strategic Investment	2.7 mi
RE Reading	NHBD	Strategic Investment	3.1 mi
MA Madeira	NEXT GEN	Strategic Investment	3.3 mi
BH Bond Hill	NEXT GEN	Strategic Investment	5.3 mi

OVERVIEW OF LONG-TERM RECOMMENDATIONS



NORTH EAST PLANNING ZONE - SUMMARY



DP DEER PARK

BIG NEXT GEN

replace, expanded
to proposed
22,500 SF - 27,500 SF

SM SYMMES TOWNSHIP

NEXT GEN

makeover + parking expansion
at current
14,960 SF

MA MADEIRA

NEXT GEN

strategic investment
at current
14,600 SF

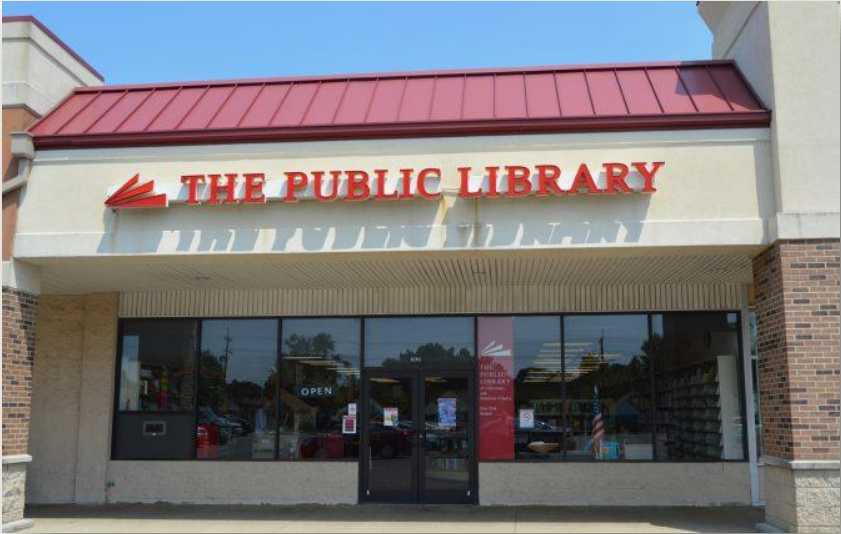
BH BOND HILL

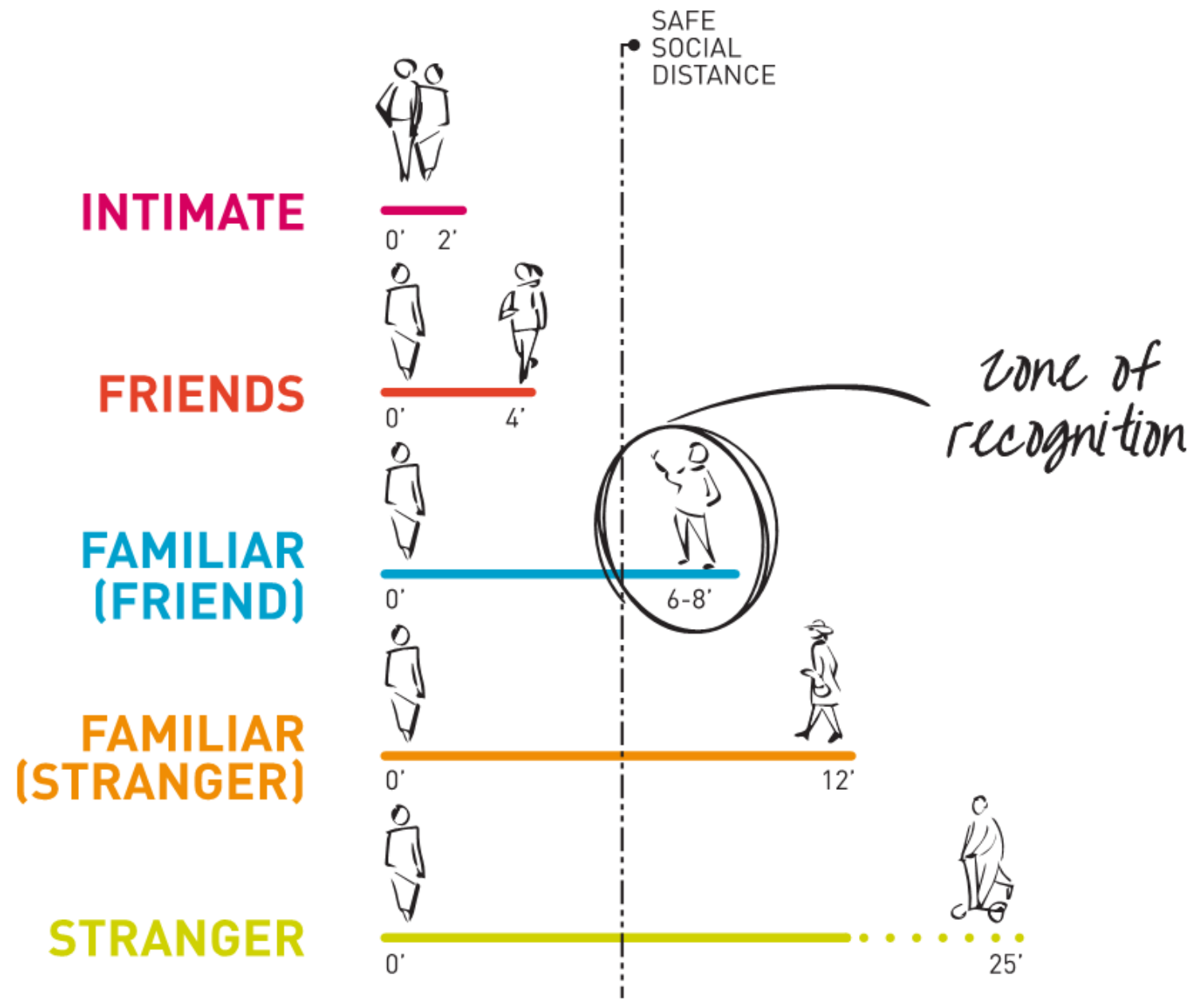
NEXT GEN

strategic investment
at current
12,910 SF

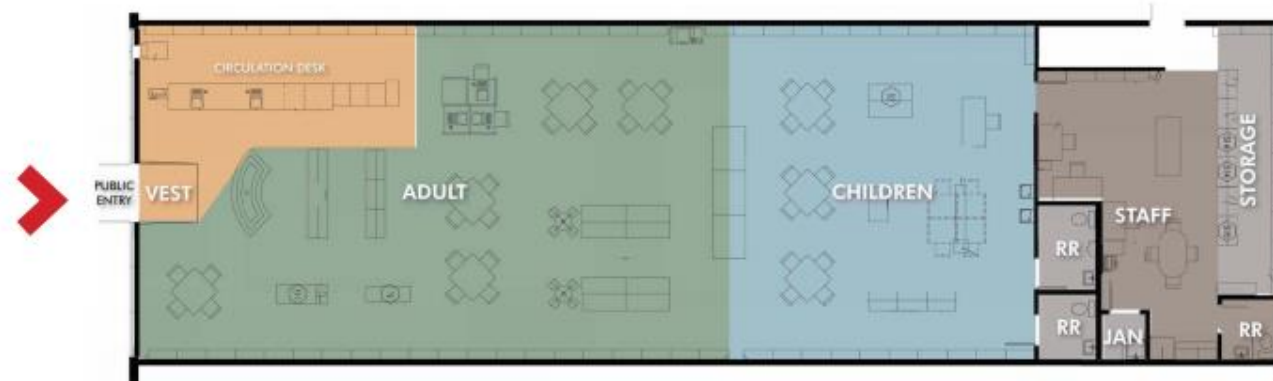
Amanda Markovic
Principal, GBBN Architects



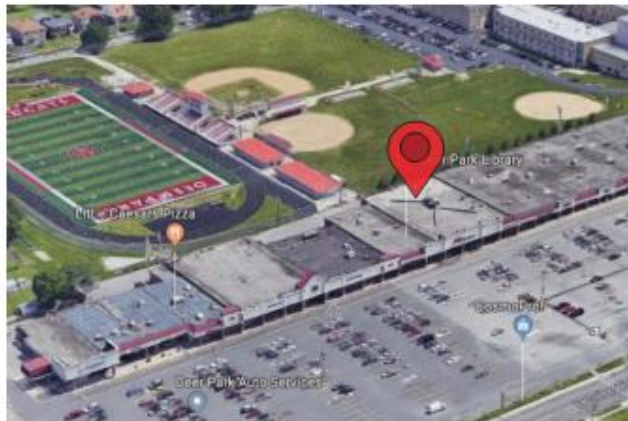




Existing Deer Park Branch



Floor plan



Aerial view of the location



Children's area

Facility Master Plan





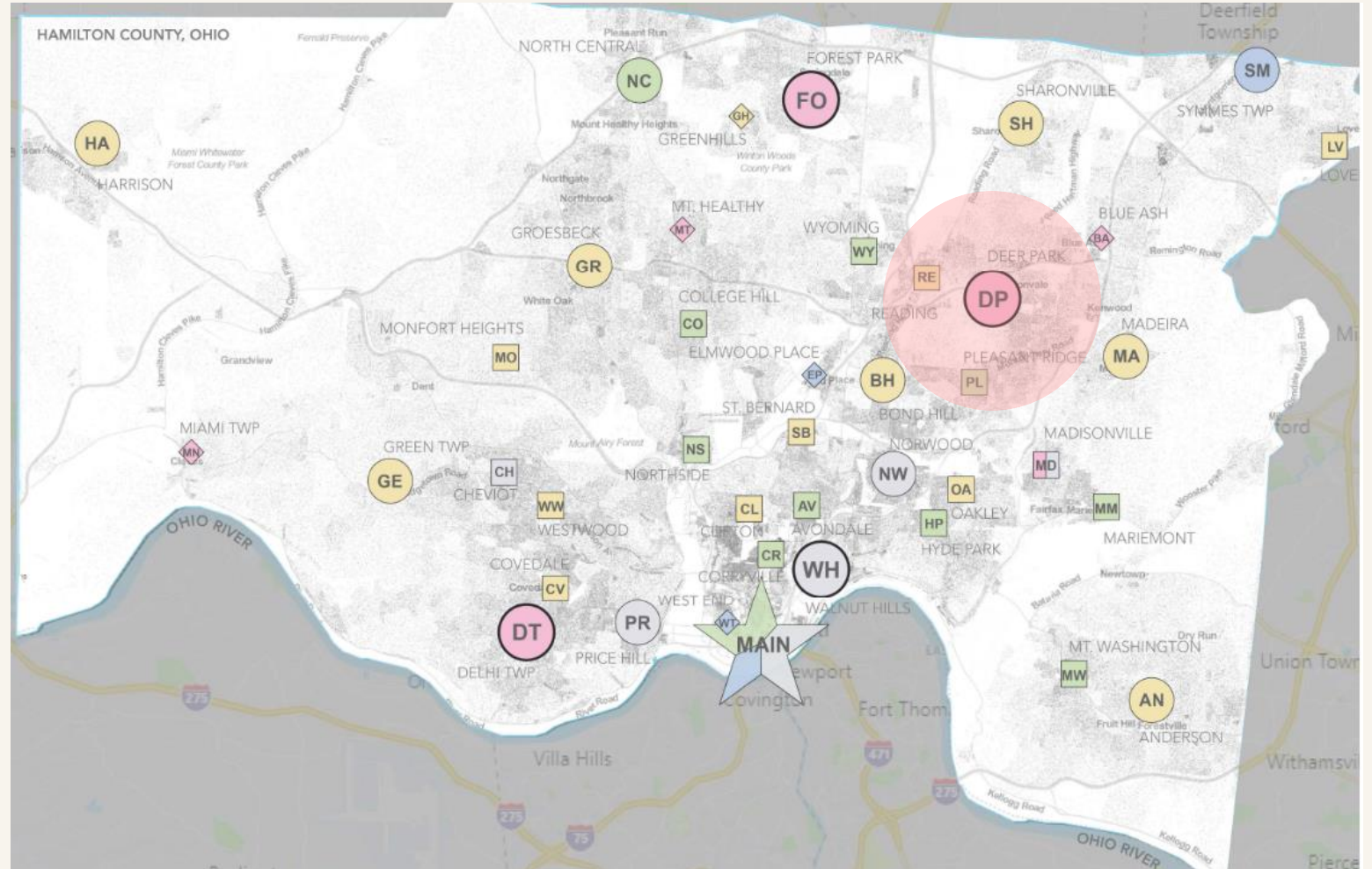
Word cloud of important library aspects, from the North East Planning Zone.

Community Input

- Develop dynamic, engaging, and inclusive spaces for youth services.
- Delineate space by activity with particular focus on increasing access to technology and social spaces for community.
- Branch design should reflect the diversity of community's culture and ages.
- Consider offering Sunday hours to offer more inclusive service.

Deer Park Branch

A space that will attract and serve
the most immediate community
AS WELL as the broader region.



Big Next Generation Branch

Branch Library Types



FOCUSED
<5,000 SF

Tiny & Impactful

- Tailored Services
- Small Capacity



NEIGHBORHOOD
5,000 – 12,000 sf

Small & Heavily Used

- Sampling of Services
- Limited Capacity



NEXT GENERATION
>12,000 sf

Modest, Diverse Opportunities

- Broad Range of Services
- Modest Capacity

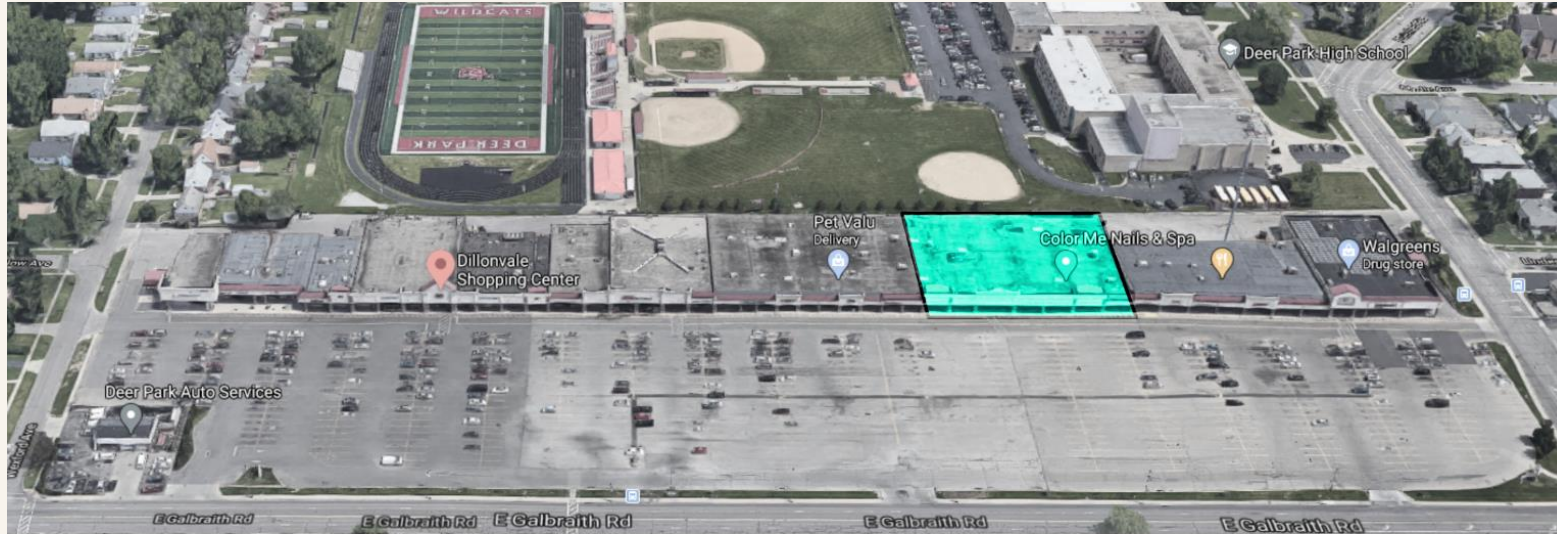


BIG NEXT GEN
>20,000 sf

Larger, Destinations

- Broadest Range of Services
- Larger Capacity

Dillonvale Shopping Center



VISION



Vision

The new home for the Deer Park Next Generation Library will provide a place that welcomes, supports and inspires the community, sustaining the mission to connect people with the world of ideas and information. It will be a place that encourages the community to gather, connecting with each other and with essential services.

Objectives

- Transform the former TJ MAXX to become an accessible, inviting and vibrant information and community hub.
- Flexible design that adapts to meet the needs of the community and anticipates future service, programs and technologies.
- Invest in the most immediate community while also attracting people from the larger, more diverse North East zone where a full range of services are provided from traditional to emerging.
- Engage a broad customer community, from toddlers to older adults, with spaces that range from collaborative areas and large program rooms to spaces for exploration and quiet focus.

*For the curious, social learner,
The Public Library is the catalyst
for **'learning without limits'** in
the community*



Design Process

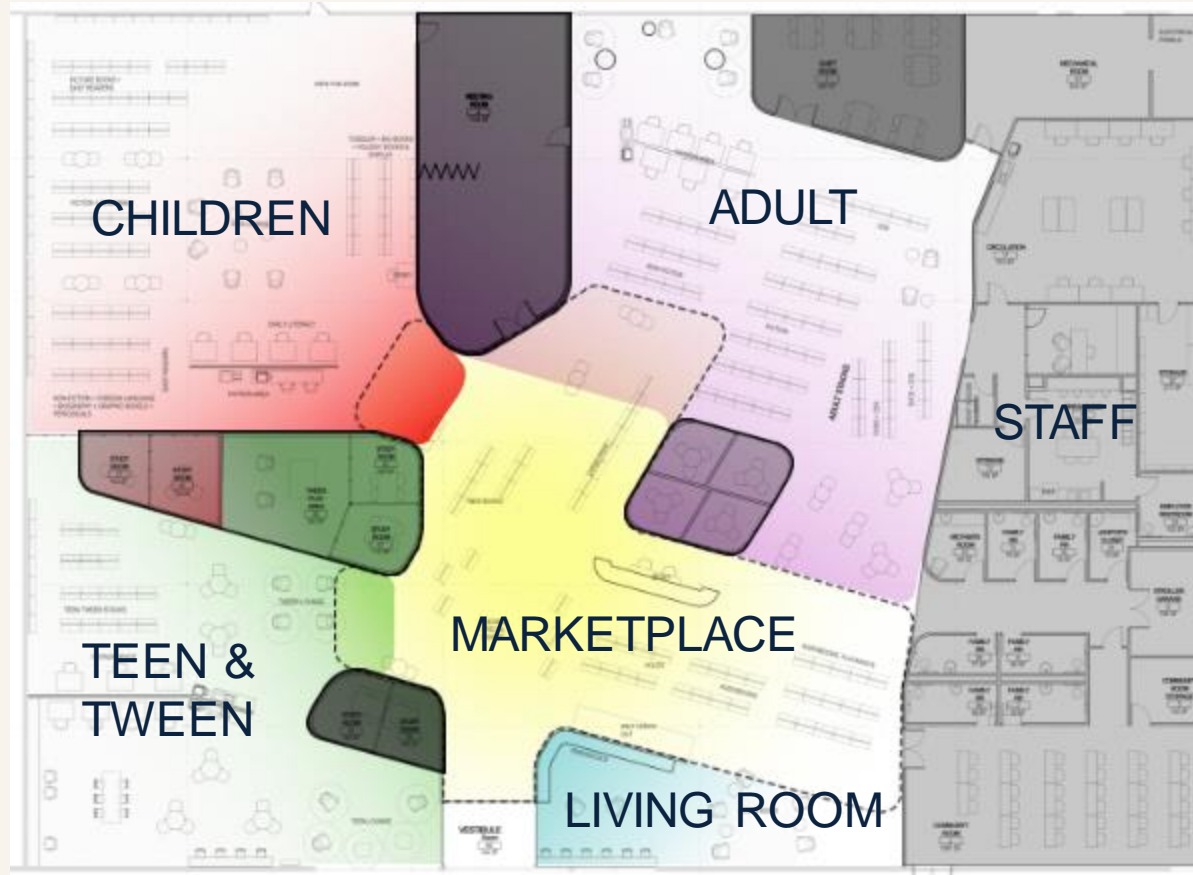


Marketplace Precedent



An active and flexible hub for the library.

Plan Concept



Flexible Design



A careful balance is struck between fixed and mobile furniture and shelving elements.

Flexible Design



To accommodate known and potential needs the space should accommodate this, as well as.....

Flexible Design



.....this!

Branch Design



Sean Cottengim
Project Architect, GBBN Architects



Design Themes



**CONNECTION TO
OUTDOORS**



**COLOR BLOCKING
AS PLACEMAKING**

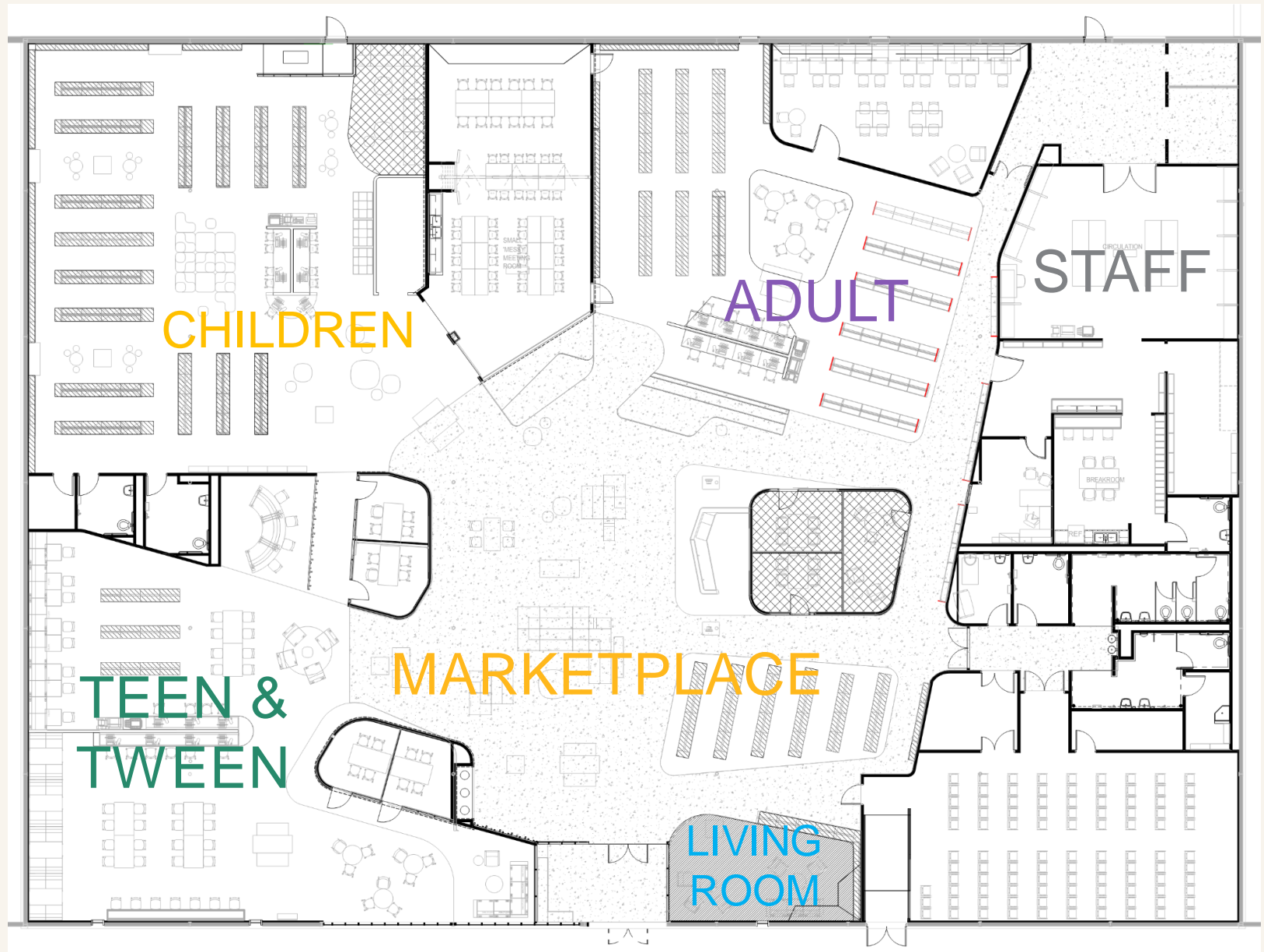


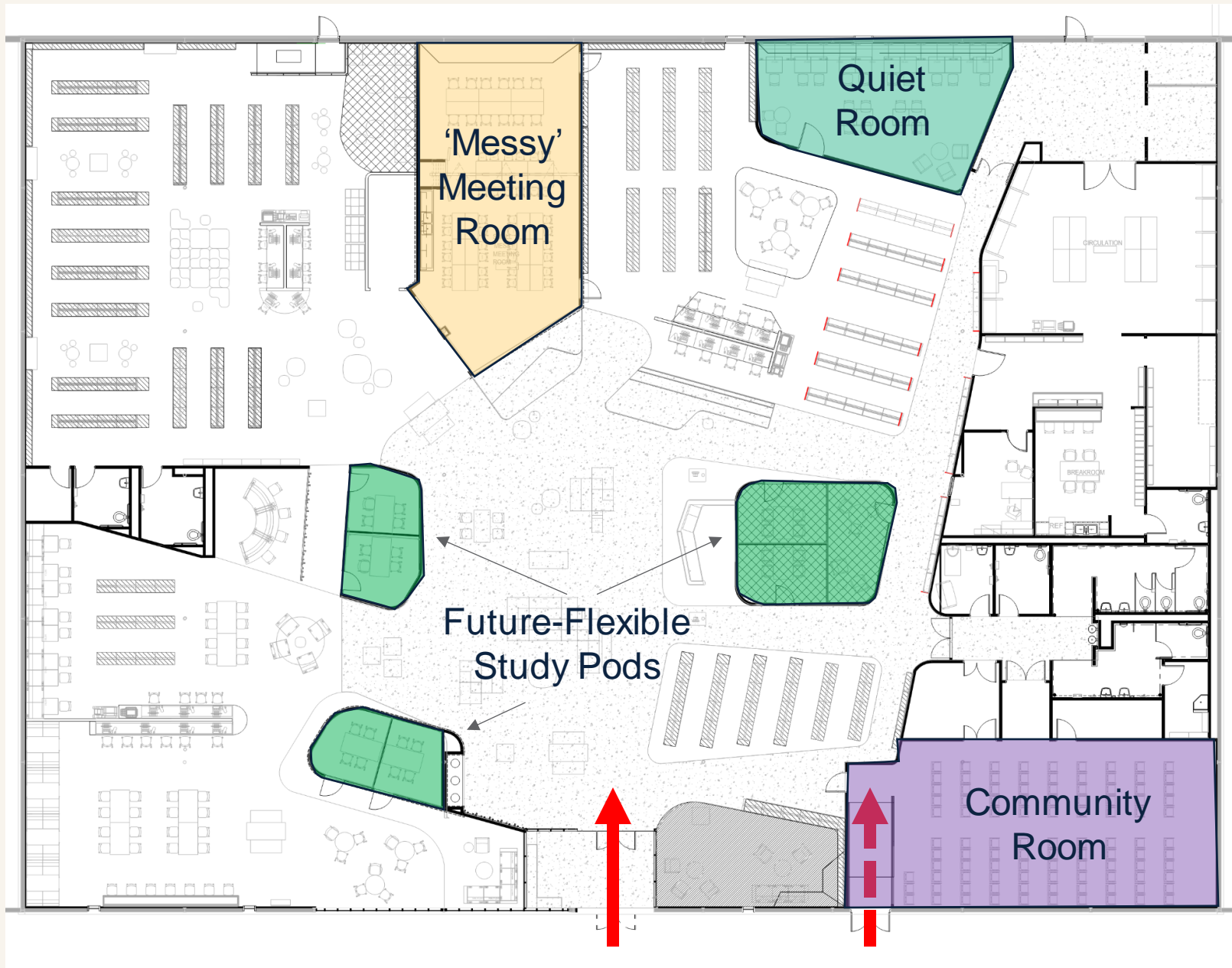
**EXPERIENTIAL
BRANDING**

Interior Concepts (Not Final Design)

Active and durable spaces supported by clean, bright details and access to natural light.







MARKETPLACE



CHILDREN'S

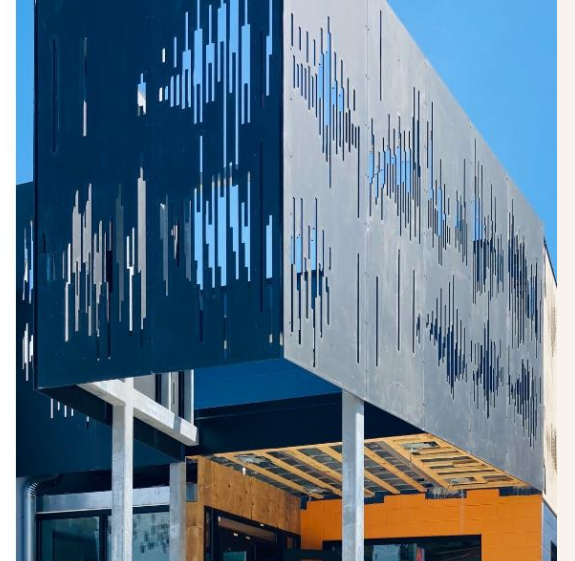


TEEN



Exterior Concepts (Not Final Design)

A simple but impactful cladding application that announces the entry and communicates the size of the library.



EXTERIOR



EXTERIOR



Hamilton County
cincinnati
public
library
Deer Park

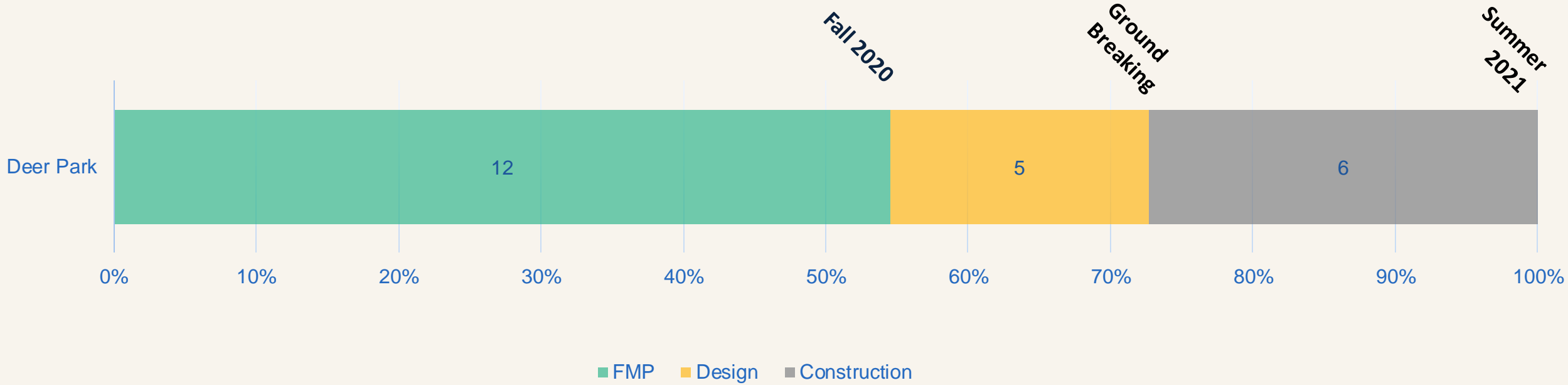
See for yourself!



Scan QR code with your mobile device
for an immersive 3D view from the
marketplace.



Timeline



Q & A

Some that we already received...

- How will the community be involved in envisioning the new building? For example, opportunities to contribute to a mural
- Will there be makerspace equipment?
- How will staffing change? Will any staff be moved to a different location other than Deer Park?

Thank You!



Scan QR code with your mobile device
for an immersive 3D view from the
marketplace.

CincinnatiLibrary.org/next-generation/

Visit the URL for updates

