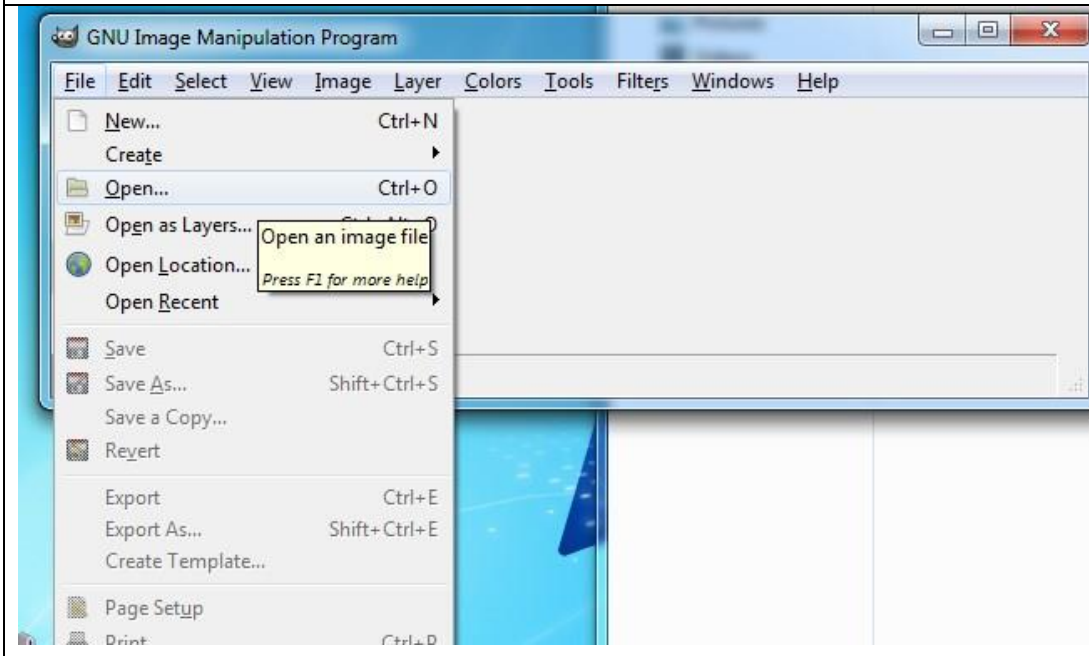


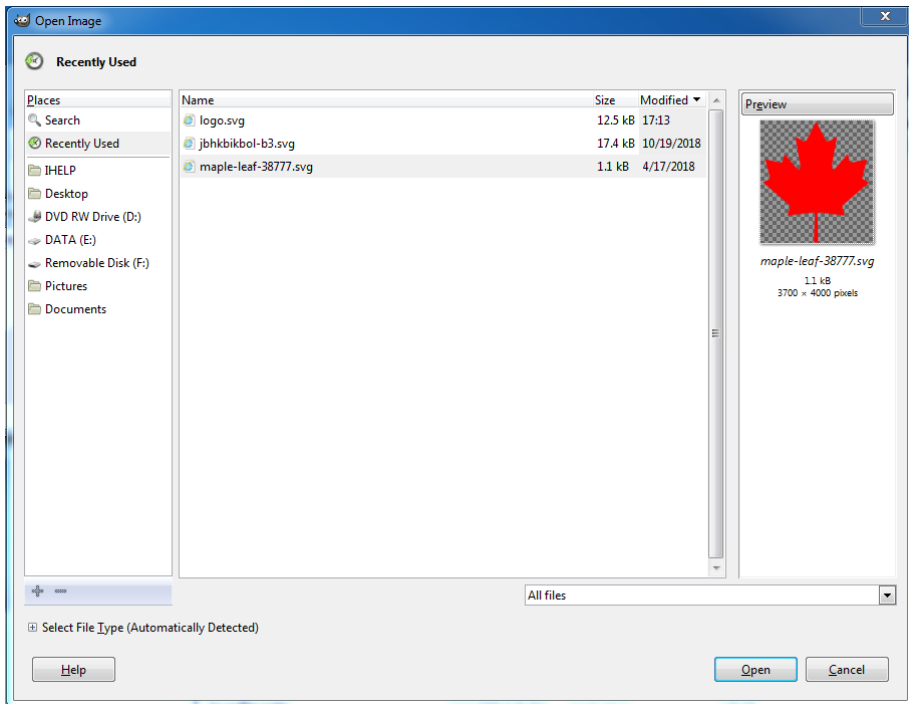
# How to Trace a File Using GIMP



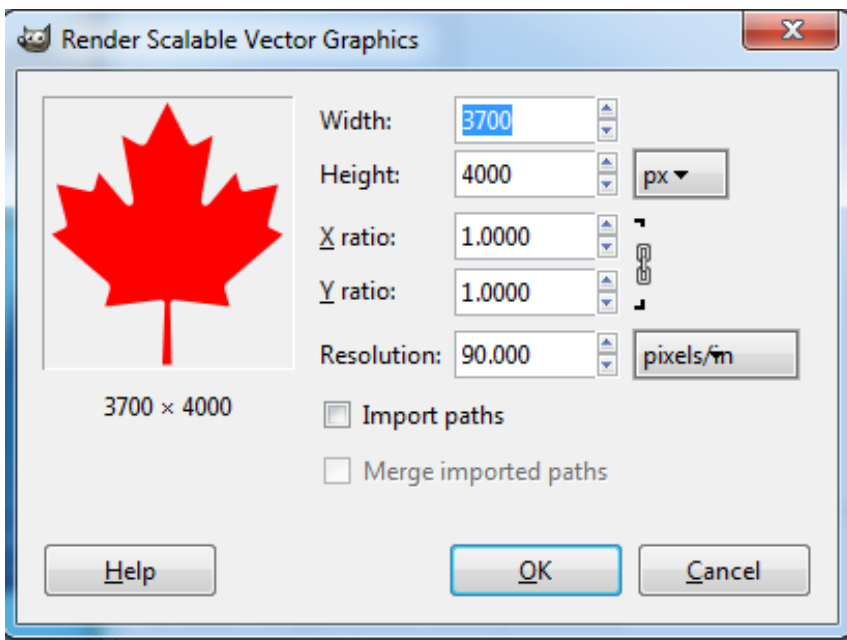
You can use GIMP to trace files to create an SVG file that Graphtec Pro Studio should be able to open properly.



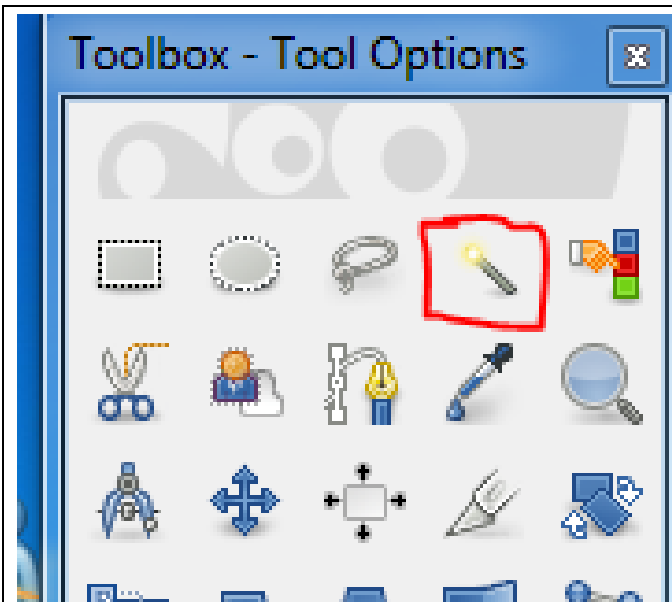
Open GIMP, click on "File" and choose "Open..."



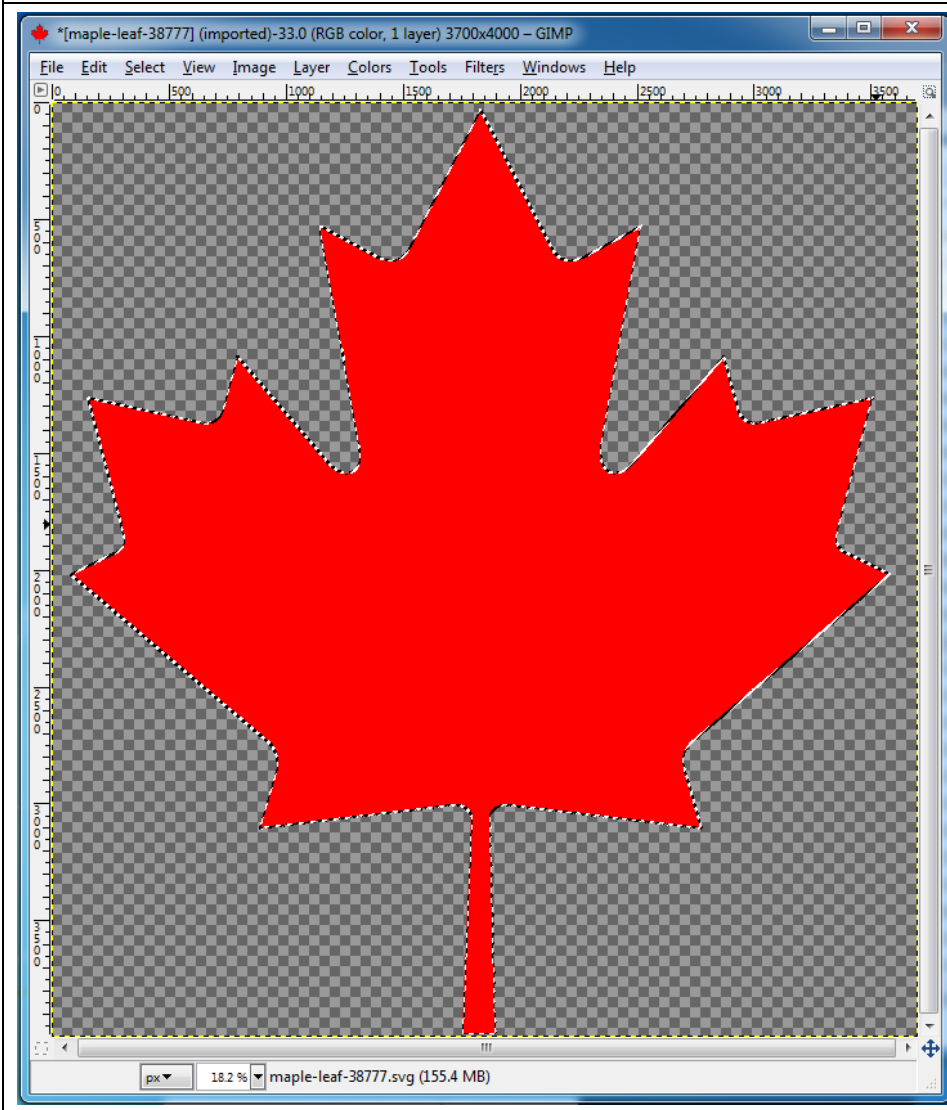
Select the file you want to open.



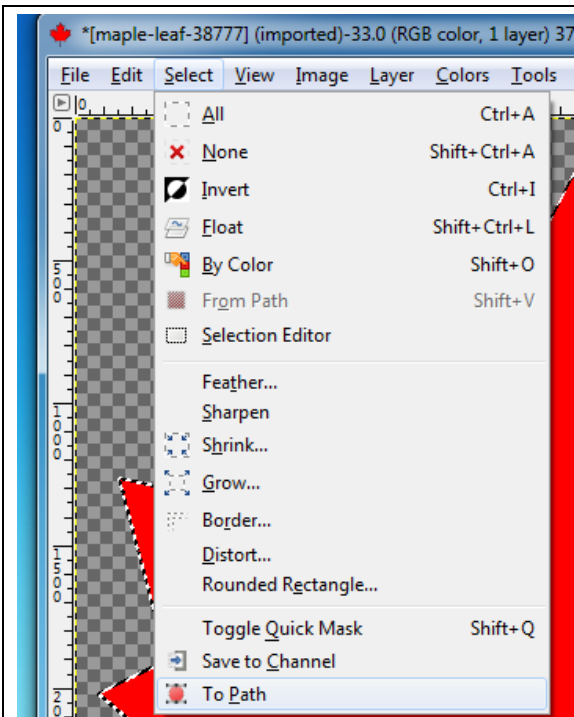
Once you choose the file you should be given import options. Leave both options unchecked and click OK.



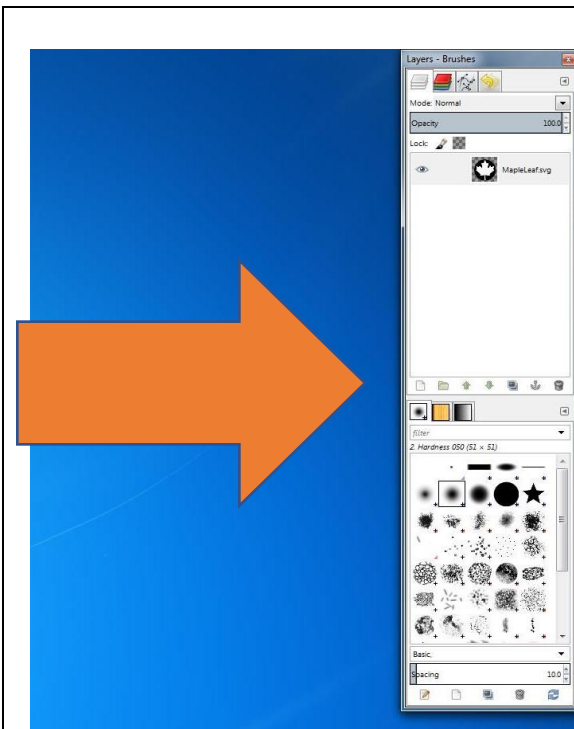
On the toolbar on the left hand side, click on the Fuzzy Select Tool, it looks like a magic wand.



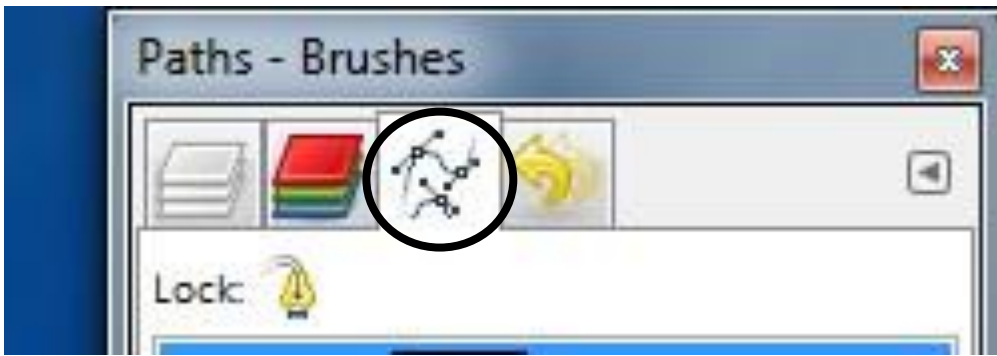
Click on the coloured part of the image and a dotted outline should appear around it. If there are multiple parts, hold down the shift key as you click on each part to select them all together.



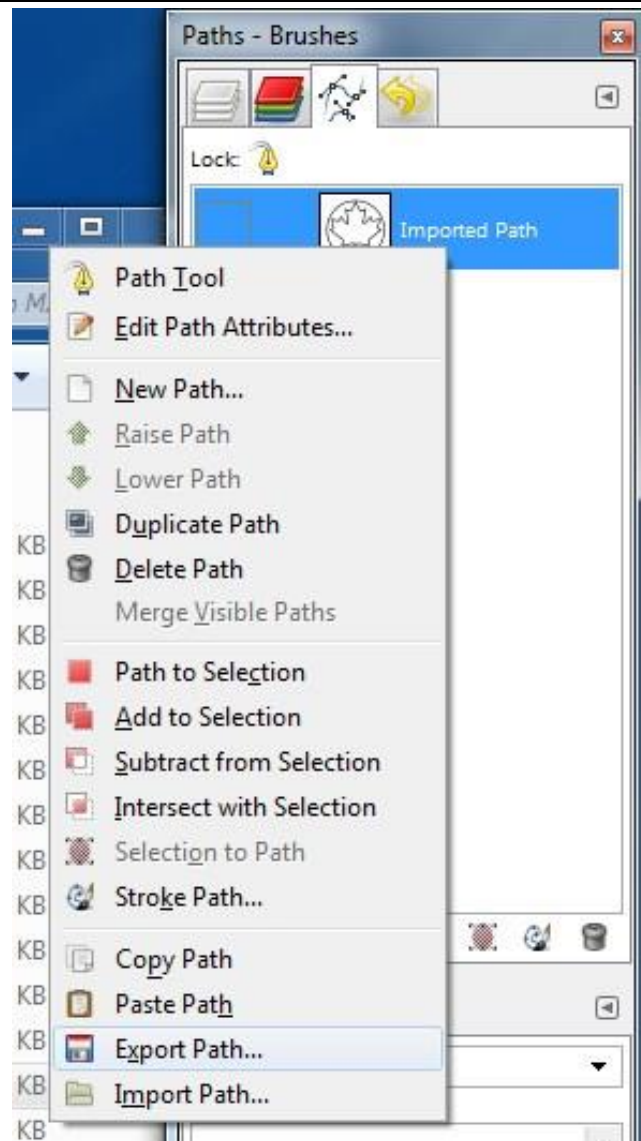
Once everything is selected, click “Select” in the Menu Bar and choose “To Path”



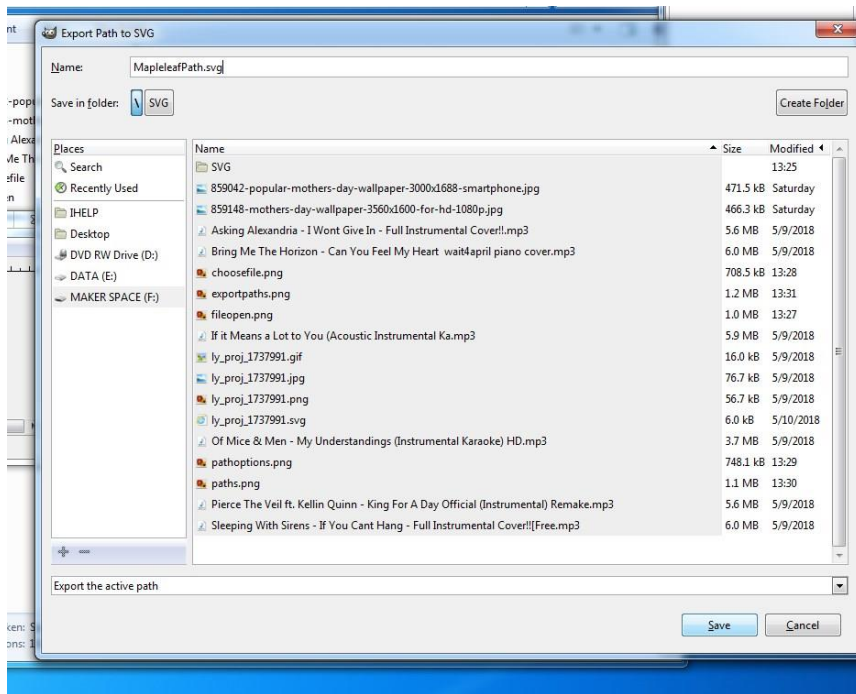
Look for a Tab on the right side of the screen that displays the Layers and Brushes. (Sometimes it may display something else but that is okay.)



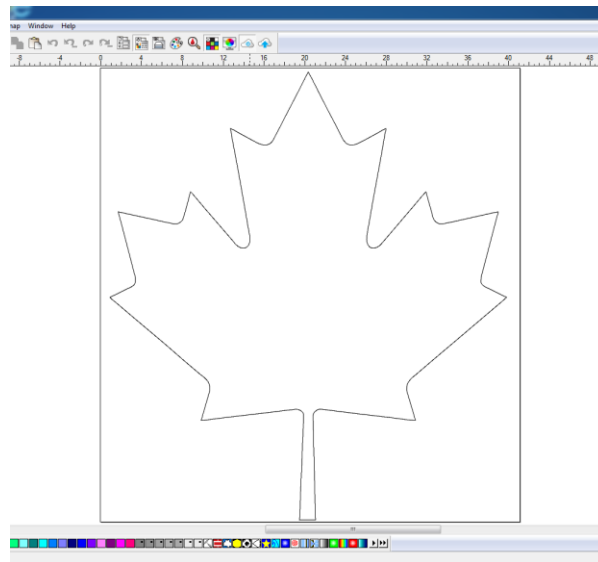
Click on the Paths Tab



Right click on the Imported Path and select "Export Path"



Choose where to save file, give it a name and click Save.



Finally, open the file in Graphtec Studio Pro and the file should open correctly. (The fill shouldn't matter since the vinyl cutter traces the outline anyway)