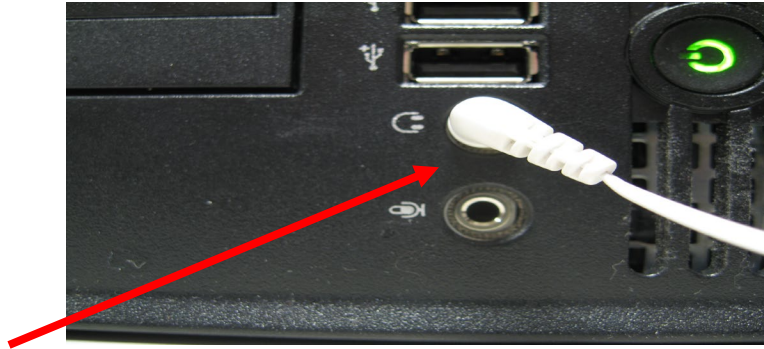
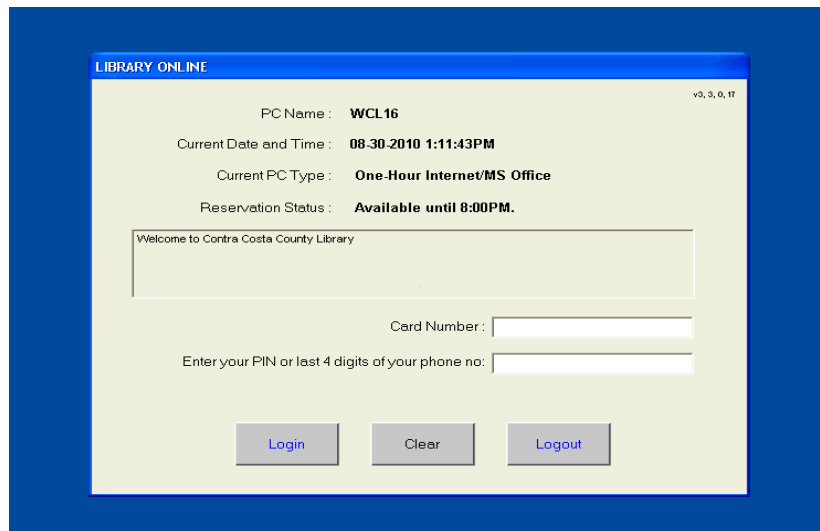


NVDA DOCUMENTATION

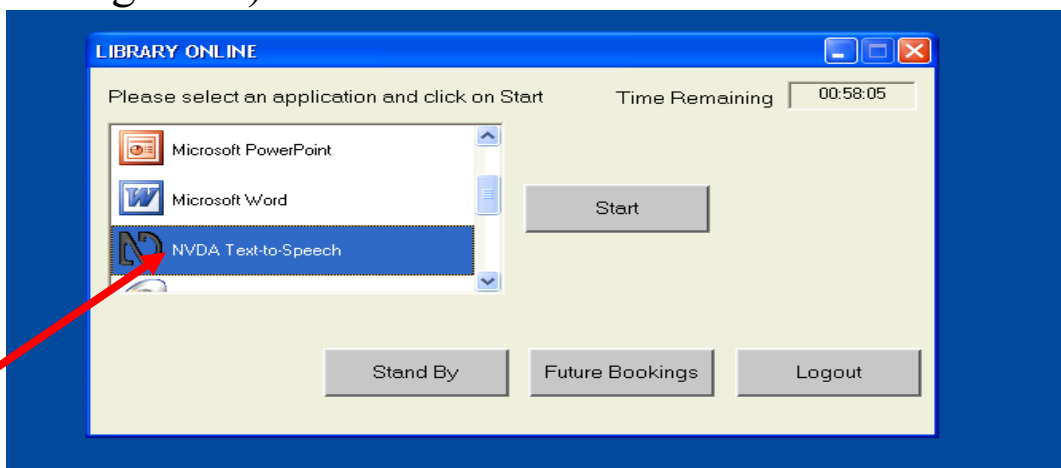
HEADPHONES MUST BE PLUGGED IN



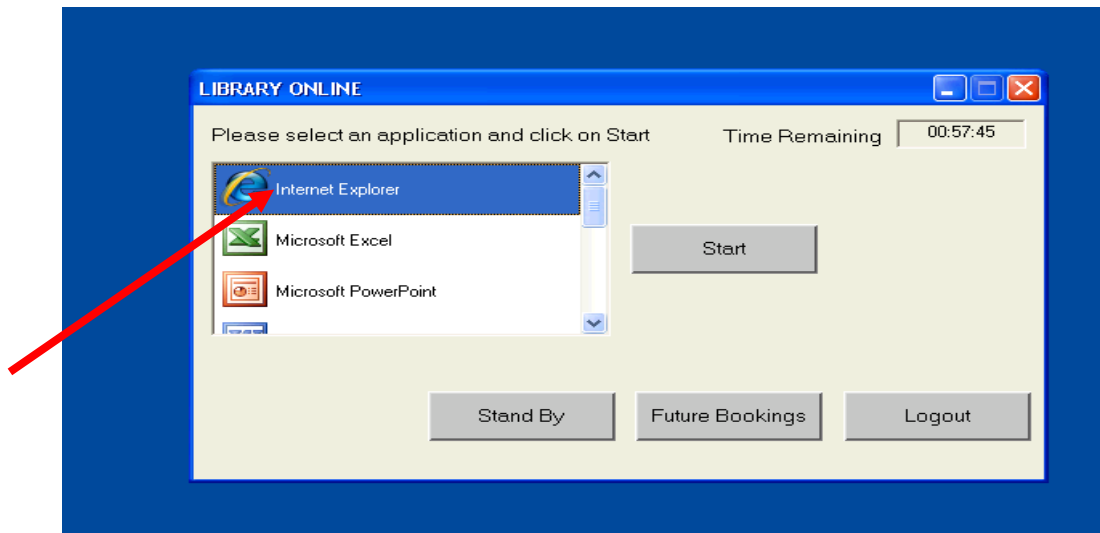
1. Log on using your library card and your pin/phone #



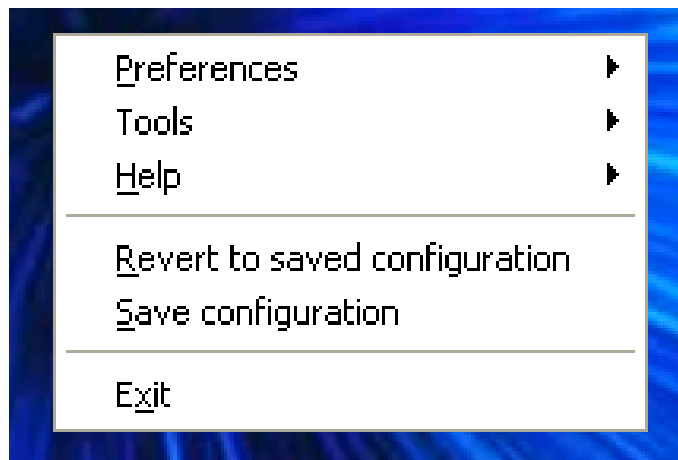
2. Click on the “NVDA Text-to-Speech” (Nothing will pop up after you click it; this just starts the program in the background)



3. Click on the program you wish to use with the NVDA text-to-speech



4. Move the mouse cursor over the text or object to be read
5. To Exit NVDA press "INSERT"& the "N" key at the same time; a drop down menu will appear with exit at the bottom



The menu will also have preference, tool and help settings that can be changed. Any settings changed during the session will revert to default after log-out.